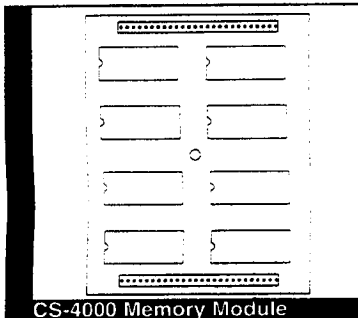


# CS-4000 Software Upgrade Kit

Document Number: 46-293 Rev. E  
February 1996



## INSTALLATION INSTRUCTIONS

### About This Document

This document describes how to replace the existing software in your CS-4000 Central Station Receiver with the new software included in this kit.

**Note:** This software upgrade is compatible only with CS-4000 units that have 64K of random-access memory (RAM).

### Product Summary

This software upgrade replaces the existing software in your CS-4000 Central Station Receiver. The upgrade adds enhancements and support for current and new ITI Control Panels. For more information, refer to the *CS-4000 Release Notes (46-700)*.

The kit consists of the following:

- 1 Memory Module with software
- *CS-4000 Software Upgrade Kit Installation Instructions (46-293)*
- *CS-4000 Release Notes (46-700)*

### Tools Needed

- Phillips screwdriver

### Before You Begin

Before replacing the software, you should generate a printout of your current CS-4000 settings. This gives you a permanent record of the configuration settings so you can configure your CS-4000 exactly as it was before.

### Record the Current CS-4000 Settings

The following describes how to generate a printout of your current CS-4000 settings:

- 1) Make sure the printer connected to the CS-4000 is on-line.
- 2) Type `MSTATUS <enter>` on the CS-4000 keyboard, and the printer will print out all current settings, which are also displayed on the CS-4000 screen.
- 3) Type `E31 <enter>`, `E3X <enter>`, `E41 <enter>`, and `E42 <enter>` on the CS-4000 keyboard to generate a printout of the alarm code conversion settings.

### Replacing the Software

The following procedures describe how to remove the existing CS-4000 Memory Module and how to install the new Memory Module.

### Removing the Existing Memory Module

- 1) Disconnect the AC power cord and the backup battery from the back of the CS-4000.
- 2) Disconnect all other devices (printers, monitors, and keyboard) from the CS-4000.
- 3) Lay the CS-4000 upside-down on a clean surface.

- Remove the two screws that secure the Memory Module Access Plate (see Figure 1). Set the screws and plate aside.

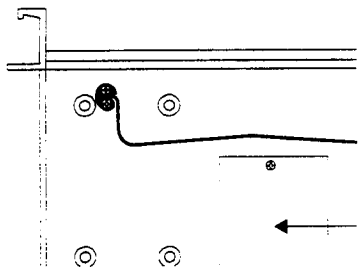


Figure 1. Memory Module Access Plate Location

- Remove the Memory Module securing screw (see Figure 2).

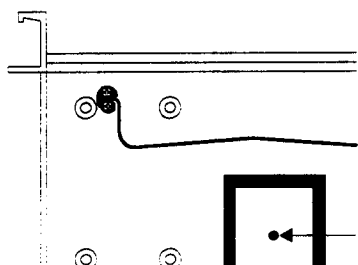


Figure 2. Memory Module Secure Screw Location



**Warning:** You must be free of all static electricity when handling electronic components. Touch a grounded bare metal surface before touching the circuit board. You should always wear a wrist grounding strap.

- Grasp the Memory Module with one hand (see Figure 3).

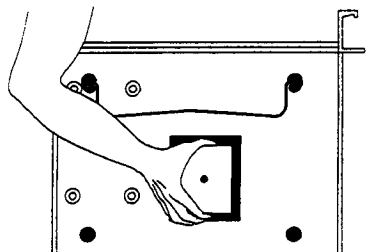


Figure 3. Removing the Memory Module

- Gently rock the module from left to right while pulling it outward, until all pins on the Memory Module are completely out of the CS-4000 circuit board holes. Set the module aside.

## Installing the New Memory Module

- Remove the new Memory Module from the anti-static bag.
- Locate the two chip locations on the Memory Module labeled U1 and U5 (see Figure 4).

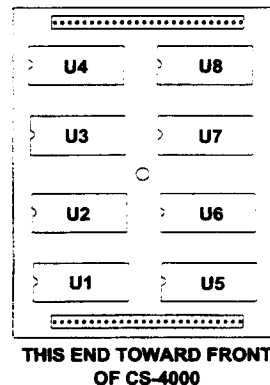


Figure 4. U1 and U5 Chip Locations

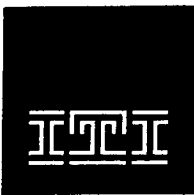
- Align the pins on the new Memory Module with the holes on the CS-4000 circuit board, so that the U1 and U5 chips are positioned toward the front of the CS-4000.
  - Gently push the lower pins on the Memory Module into the CS-4000 circuit board holes, then push the upper pins into the circuit board holes until the module makes contact with the standoff at the securing screw mounting hole.
- Warning:** Do not force the Memory Module if you experience difficulty installing it. Be sure the Memory Module is positioned as described in step 3; otherwise, you may damage it.
- Install the Memory Module securing screw.
  - Replace the Memory Module Access Plate with the two screws, and place the CS-4000 in its normal position.

## Powering Up the CS-4000

The following describes how to power up the CS-4000.

- Connect any printers, monitors, and keyboard to the appropriate locations on the CS-4000.
- Connect the backup battery.
- Connect the AC power cord.

The CS-4000 starts up automatically and displays the installed software version on the screen.



**INTERACTIVE TECHNOLOGIES, Inc.**  
2266 SECOND STREET NORTH  
NORTH SAINT PAUL, MN 55109  
T: 612/777-2690  
F: 612/779-4890

# CS-4000 Version 6.1.1 Software Upgrade

**WIRELESS**  
Security  
Automation  
Access Control

## **CS-4000 Version 6.1.1 Software Upgrade Kit** **Part Number 60-726** **October 1997**

Your CS-4000 software upgrade kit includes the following:

- CS-4000 Version 6.1.1 Memory Module
- *CS-4000 Release Notes (46-700 Rev. G)*
- *CS-4000 Software Upgrade Kit Installation Instructions (46-293 Rev. E)*

Version 6.1.1 software provides support for the following panels:

- UltraGard™ Version 2.0
- Security Pro™ 5000 Version 2.0
- LifeGard® Version 5.0
- SIMON™

### **Return Earlier Version Memory Modules for CREDIT!**

Return your earlier version memory module containing version 5.0 through 6.0 software and receive a \$25.00 credit toward version 6.1.1 software.

To receive the \$25.00 credit, all you have to do is:

1. Remove your 5.0 or 6.0 version memory module from the CS-4000 using the *CS-4000 Software Upgrade Kit Installation Instructions (46-293 Rev. E)*.
2. Place the memory module in the anti-static bag in which the new memory module was packaged.
3. Place the memory module in the box in which the upgrade kit was sent.
4. Attach the enclosed pre-paid address label to the box and seal the box.

**Note:** You must use the pre-paid address label to receive the \$25.00 credit because the label contains a credit authorization code.

5. Mail the box promptly to ITI.

#### **Credit Restrictions:**

- a. You must return your earlier version memory module within 30 days of receipt of your version 6.1.1 memory module.
- b. Credit is subject to validation.

ITI and LifeGard are registered trademarks of Interactive Technologies, Inc. UltraGard, Security Pro, and SIMON are trademarks of Interactive Technologies, Inc.

## Configuring the CS-4000

Configure the CS-4000 using the information from the printout you generated earlier. If you need more information on configuring, refer to your *CS-4000 Installation and User's Manual* (46-056).

## Notices

Not applicable for this device.



**INTERACTIVE TECHNOLOGIES, INC.**

2266 SECOND STREET NORTH  
NORTH SAINT PAUL, MN 55109

T: 612/777-2690

F: 612/779-4890

WIRELESS

Security  
Automation  
Access Control

ITI is a registered trademark of Interactive Technologies, Inc.